

| Dates to Remember        |   |
|--------------------------|---|
| Thursdays                | 7am-7.45am Prayer at the Church Office          |
| Wed 18 <sup>th</sup> Sep | 7pm MUP AGM                                     |
| Sat 28 <sup>th</sup> Sep | 5.00pm Roche Family Welcome & Induction Service |



**Church Office Hours:** 9am - 12noon, Mon - Fri (excluding public holidays).

**‘Prayer Chain’** – Any matters requiring confidential prayer support, can be referred to the Prayer Chain Group. Contact Val Judd or Elaine Oates.

**Monday Bible Study** – Meets at 2pm in the Church House. For more info contact Elaine Oates.

**Tuesday Afternoon Bible Study** – Meets at 1.30pm in the Church House. For more info contact Maureen Wilson.

**‘Men’s Fellowship Breakfast Group’** – Meets at 7am on Tuesdays. Contact John Hawksworth for more info.

**‘Abiding Life Course’** – Meets at 3pm on Wednesdays in the Church House. Contact Stewart Patrick for more info.

**‘Womens Lunch Study Group’** – Meets fortnightly on Thursdays at 12noon in the Church House. Bring your lunch. Next meeting will be 19<sup>th</sup> September. Contact Amanda Lewis for more info.

**Women’s ‘Growth Group’** – Meets fortnightly on Thursdays at 1pm, at Diane McLean’s house. Next meeting will be 19<sup>th</sup> September. Contact Elaine Oates or Diane McLean for more info.

"God has editing rights over our prayers. He will edit them, correct them, bring them in line with His will and then hand them back to us to be resubmitted." - Stephen Crotts

**Giving/Tithing** - If you wish to tithe or make a donation to Mangapapa Church, our account number is: Mangapapa Church, 03-0638-0381084-00. Please make sure you say 'tithe' or 'donation' in the reference. If you would prefer to give using our 'Envelope' system, then see Jenny Phin who will set you up with envelopes allocated to you.

|                       | Today                                | Next Sunday 15 <sup>th</sup> September |
|-----------------------|--------------------------------------|--|
| <b>Greeters</b>       | A Clement, M Wilson                  | J & L Hawksworth                       |
| <b>Ministry Team</b>  | S Clement                            | E Oates                                |
| <b>Cups of Tea</b>    | N Coffey, M Smith,<br>A Dehne-Walker | I McCoy, N Aston                       |
| <b>AV &amp; Sound</b> | P Madsen / S Patrick                 | R Nelson / N Dunn                      |
| <b>Counters</b>       | G Stevenson                          | G Stevenson                            |



**Sunday 8<sup>th</sup> September 2024**

**10am: “Women In The Bible”**

**Leading: Rachal McIntyre      Preaching: 3 Women Share**

**Duty Elder: Stewart Patrick**

---

**Church Office:** Dione Russell    **06 867-9604**    **9am – 12noon**  
**E-mail** [office@mup.org.nz](mailto:office@mup.org.nz)    **Website:** [www.mup.org.nz](http://www.mup.org.nz)  
Mangapapa Church, PO Box 2146, Gisborne 4040

---

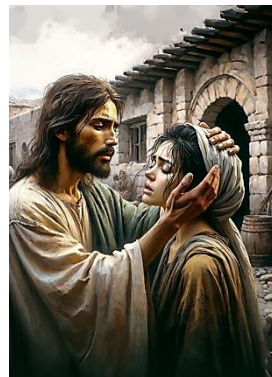
**Elders Team**  
Stewart Patrick: 021 047 0795    Rodney Judd: 06 863 2400    Al Clement: 027 855 5949

*Kids go out with Ashley or Peren Mountfort, and John Hill this morning.*

**If you have cold, flu or COVID-19 symptoms, please stay home and don't share them.**



This morning 3 of our MUP Church women will be sharing with us character studies and their insights, on 3 key women in the Bible. Sal Clement is sharing on 'Mary of Bethany', Dione



Russell is sharing on 'Leah' and Marilyn Patrick will share on 'Mary Magdalene'. It is great to have women share about women in Scripture, who found the Lord God was with them in beautiful ways, when it looked like no one cared. Or others did not care to recognise the LORD amongst them, but they did!



### **They're Here! Shane & Ali, Izzy & Esme Roche**



After 45 hours of travel from the UK, which included fog delay and flight rescheduling at Auckland airport, our new Church Leader Shane, Ali and family arrived in Gisborne at 8:33pm on Monday night. How fortunate they were to get on that last flight into Gisborne as the next morning 6 flights were cancelled due to White Island erupting volcanic ash. Let's just say Whakaari/White Island gave a 'Haere Mai' too to the Roches as they flew past!

Of course they have had some different sleep patterns this week, and actually moved into the McFarlane's home (pictured), at 4am on Wednesday morning, as they were all wide awake at 3am ☺ Of course they are so, so grateful for all that you, MUP folk have done / contributed to their journey here and the welcome groceries, cards etc. They are so excited to be here.

**Shane & Ali – September is a big month for them as they commence...** Tomorrow (Monday 9<sup>th</sup> Sept), Izzy & Esme commence School in NZ at Sunrise Christian School, so let's pray for them and for great new friendships. Shane & Ali will have many things to do this week prior to **commencing their new positions on Monday 16<sup>th</sup> September** – Ali as Mid-Wife at Gisborne Hospital and Shane commences as full-time 'Church Leader' here at MUP. Shane will ease into the Services Leading & Preaching roles, commencing with **leading on Sunday 22<sup>nd</sup> and preaching on Sunday 29<sup>th</sup> September.**

**Roche Family Official Welcome & Induction Service – Saturday 28<sup>th</sup> September, 5:00pm at MUP** – This will be a special event, commencing with a Maori whakatau welcome (simplified Powhiri), involving the Sunrise Christian School Kapa Haka Group. This followed by a BBQ and Pot Luck Dinner, then a Service of Induction with special Guests from our Methodist & Presbyterian Partner Denominations, being - Rev Nicola Grundy from Wellington as Superintendent of the Lower North Island Methodist Synod, and Rev Simon McLeay from Presbytery Central. Plus of course, several local Pastors and Church Leaders from 'Te Hahi' Churches here in Gisborne/Tairāwhiti. **We are pulling together a team of folk to coordinate the BBQ / Pot Luck Meal for this event.**



### **For Prayer this Week:**

- 1) **Pray for Mike Tombleson** – Mike is improving, thank you Lord!
- 2) **Pray for Shane & Ali Roche and family** – Their rest and preparations for commencing work on 16<sup>th</sup> Sept and Izzy & Esme commencing School this week, Monday 9<sup>th</sup>. **Pray for a long-term Home for the Roche family to rent here, in Nov/Dec.**

### **WANTED Items For Box For Ruel Orphanage Philippines**

Kids summer clothes (cotton) up to size 14yrs; cotton sheets; pillow cases; towels; swim wear; jandals or sandals, new or gently used. Small kitchen items ie, Kettle; stick blender; toaster; toothbrushes and toothpaste, would be gratefully received. Contact Angela 021 216 8446 for more info on collection or drop off at church office or Angela's house.

**Frank Darcy Change of Address** – Frank would like to let everyone to know that he is now living at Ryman Healthcare, in Room 234. If you want to contact him, he no longer has a land-line, but he does have a cell phone: 027 439 7069. Please update your Church Directory with his new details.

**Property To Rent:** Neil & Louise Smoker have a property in Mangapapa available to rent from the end of September. You can view the property and rental details through this link: <https://www.trademe.co.nz/property/residential-property-to-rent/auction-4891226068.htm>

### **Caregiver Needed**

Janet Burgess is looking for a kind lady to help her out. Caregiver experience necessary. Janet's details are in the Church Directory.

### **Need A Haircut?**

Contact Anne Dehne-Walker from 'Creative Space'. She currently has spaces available. Phone: 021 150 6531

**ANNUAL GENERAL MEETING**

**7pm  
Wednesday  
18<sup>th</sup> September**

**Mark it in your diaries now!**